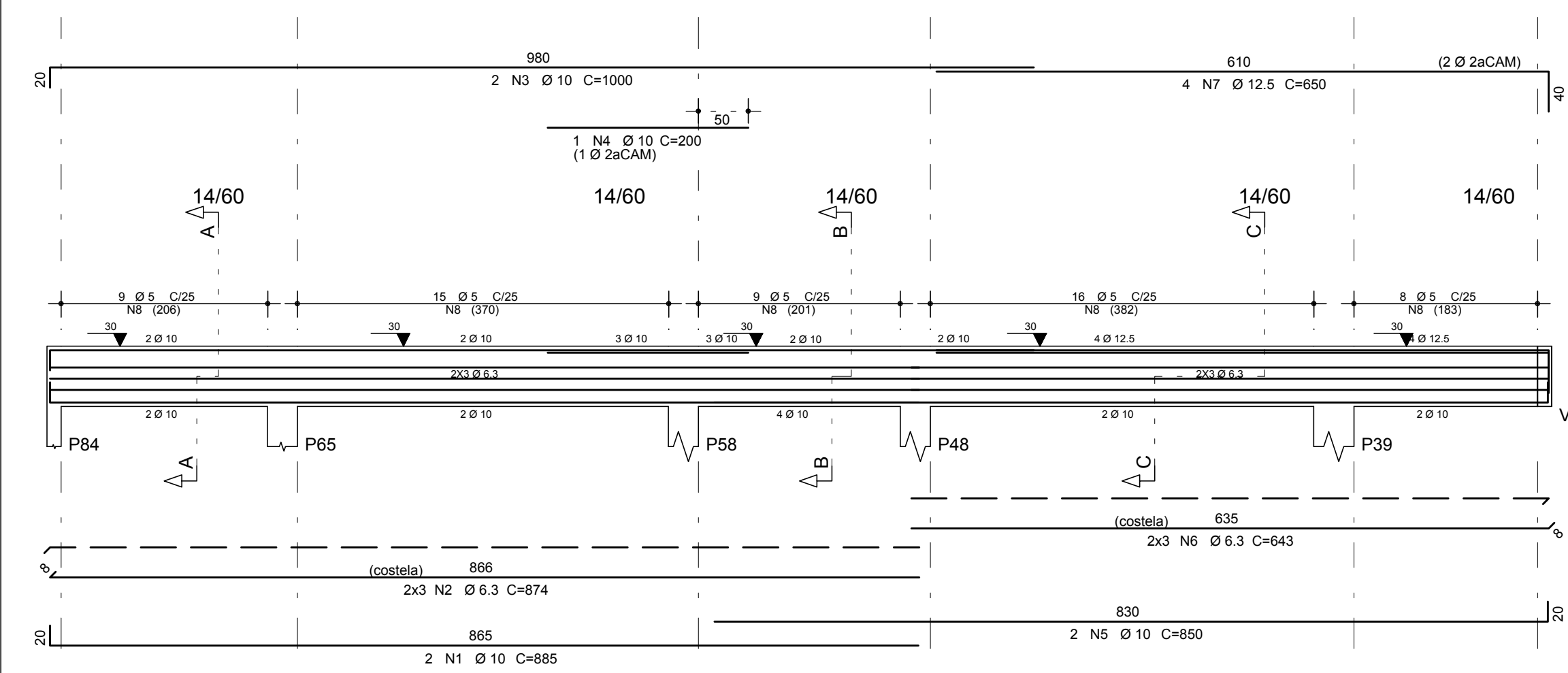


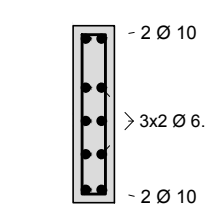
ARMAÇÃO DAS VIGAS

ESCALA 1/50
CORTES: ESCALA 1/25

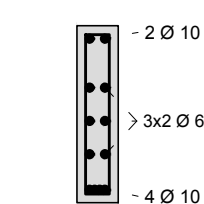
V48



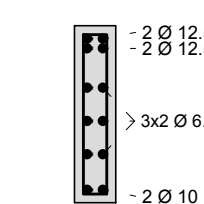
Corte A



Corte B



Corte C

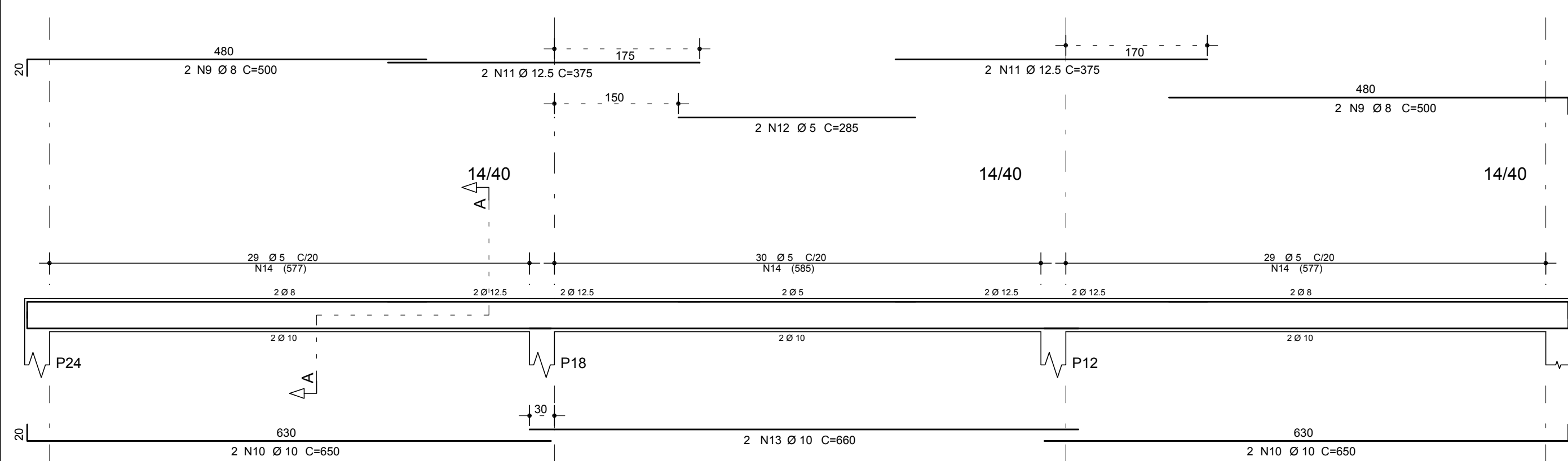


24 N8 Ø 5 C=139

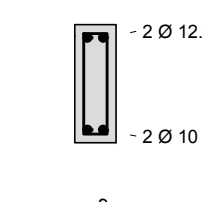
9 N8 Ø 5 C=139

24 N8 Ø 5 C=139

V49

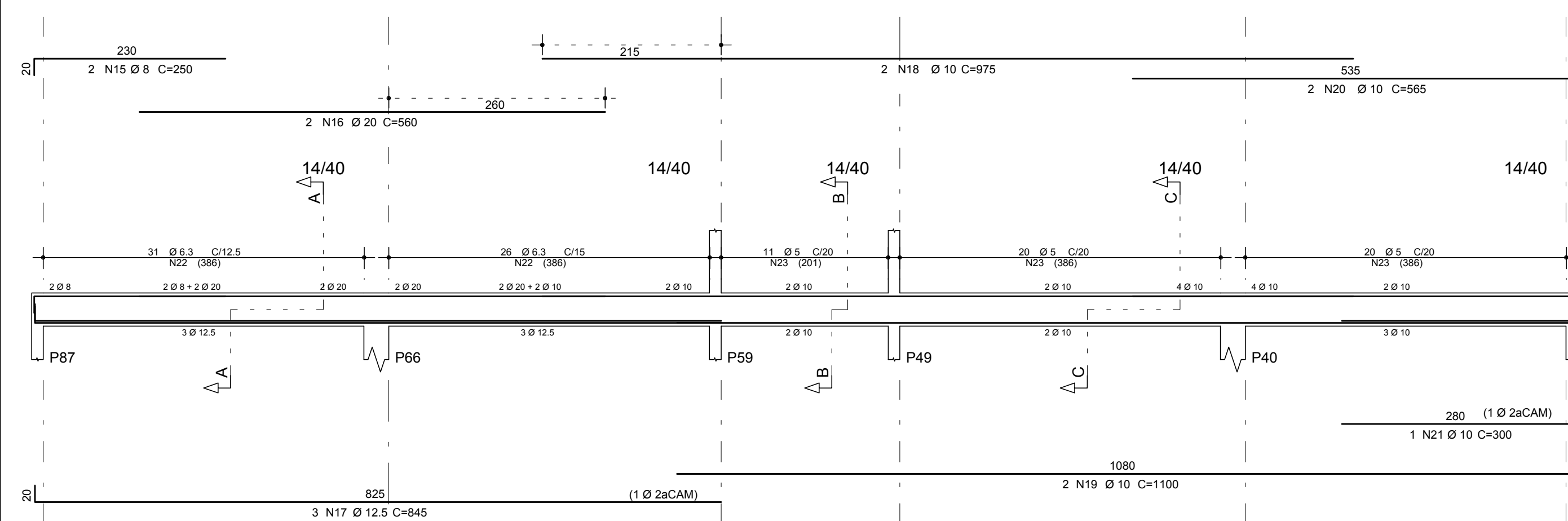


Corte A

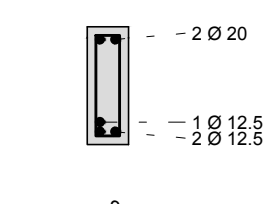


88 N14 Ø 5 C=99

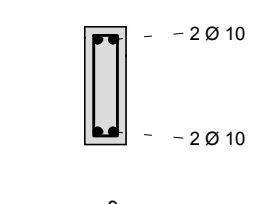
V50



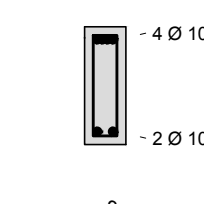
Corte A



Corte B



Corte C

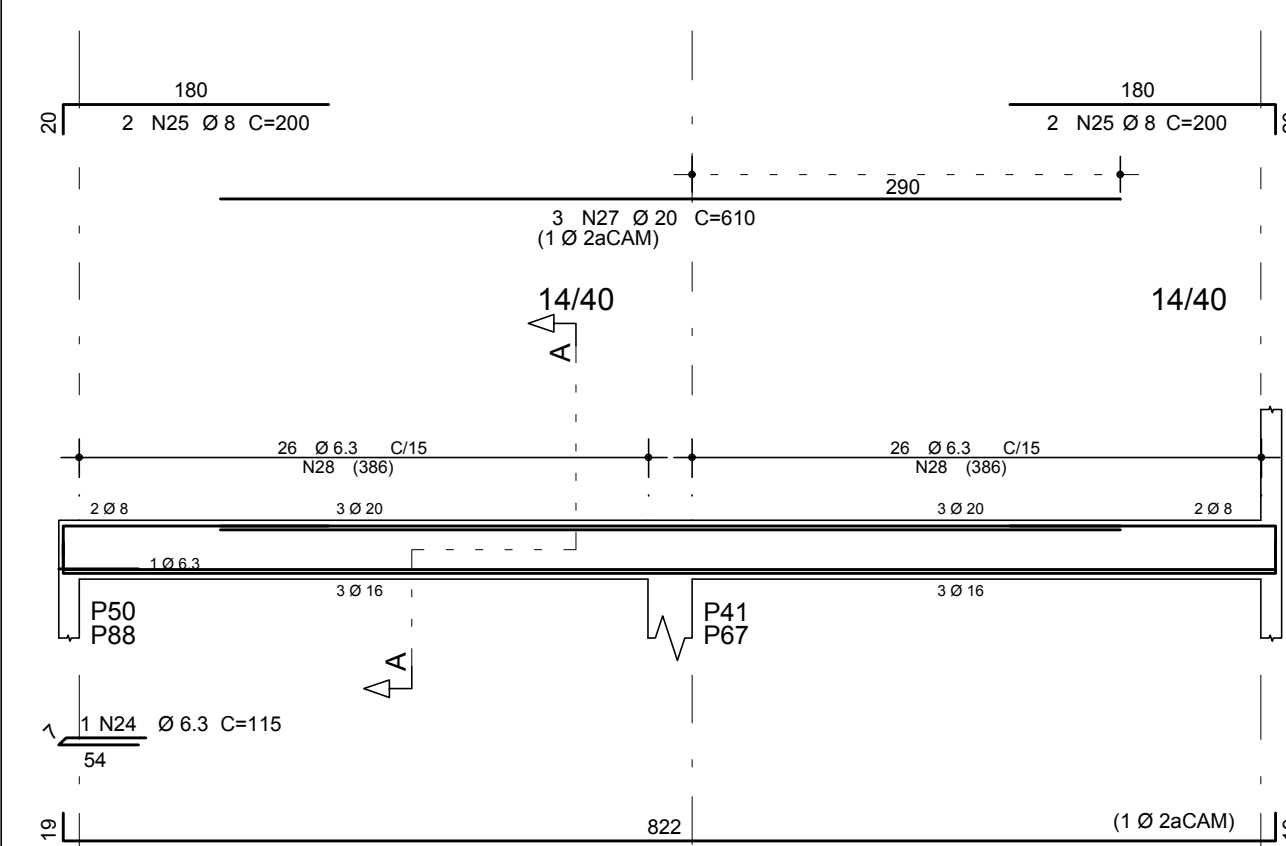


57 N22 Ø 6.3 C=100

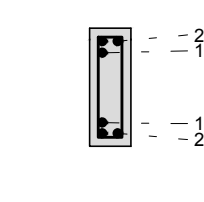
11 N23 Ø 5 C=99

40 N23 Ø 5 C=99

V51=52

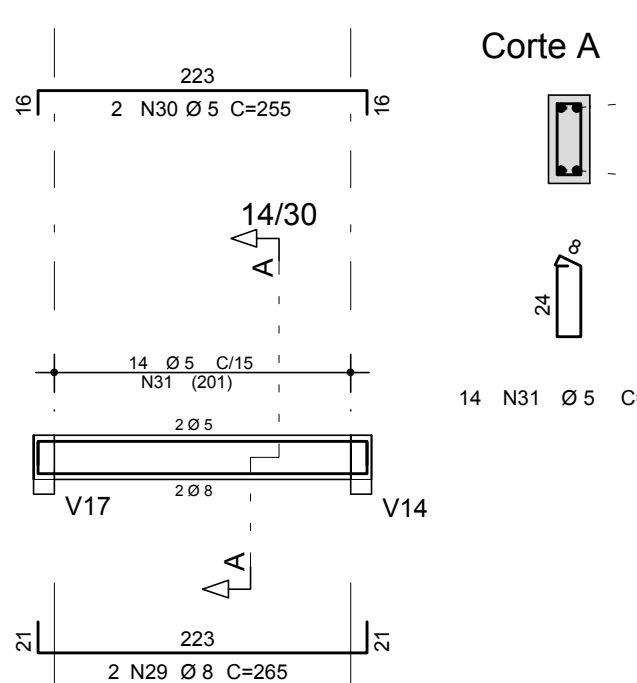


Corte A

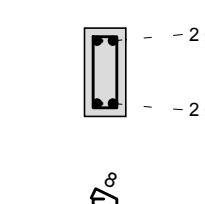


52 N28 Ø 6.3 C=100

V53

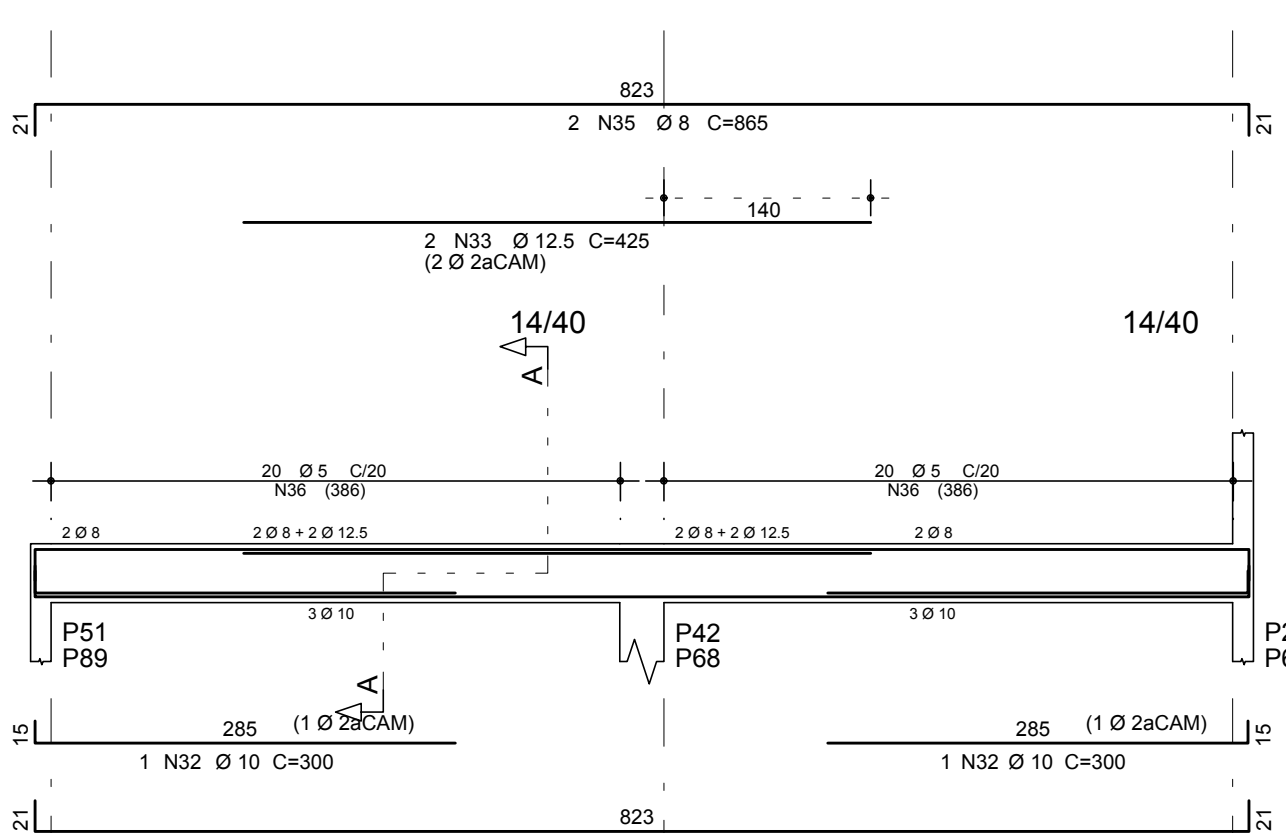


Corte A

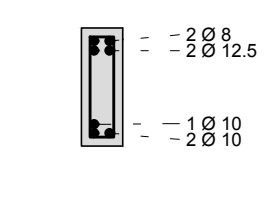


14 N31 Ø 5 C=79

V54=V55



Corte A



40 N36 Ø 5 C=99

PMMS			
1	0.10	7	
2	0.20	7	
3	0.30	7	
4	0.40	7	
5	0.50	7	
6	0.60	7	
7	0.10	7	
11	0.40	7	
30	0.10	30	
161	0.10	7	
170	0.10	170	
253	0.10	253	
254	0.10	254	

	AÇO	POS	BIT (mm)	QUANT	COMPRIMENTO	
					UNIT (cm)	TOTAL (cm)
V48	50A	1	10	2	885	1770
	50A	2	6.3	6	874	5244
	50A	3	10	2	1000	2000
	50A	4	10	1	200	200
	50A	5	10	2	850	1700
	50A	6	6.3	6	843	3858
	50A	7	12.5	4	650	2600
	60B	8	5	57	139	7923
V49	50A	9	8	4	500	2000
	50A	10	10	4	650	2600
	50A	11	12.5	4	375	1500
	50A	12	5	2	285	570
	50A	13	10	2	660	1320
	60B	14	5	88	99	8712
V50	50A	15	8	2	250	500
	50A	16	20	2	560	1120
	50A	17	12.5	3	845	2535
	50A	18	10	2	975	1950
	50A	19	10	2	1100	2200
	50A	20	10	2	565	1130
	50A	21	10	1	300	300
	50A	22	6.3	57	100	5700
	60B	23	5	51	99	5049
	V51=52 (X2)	50A	24	6.3	2	115
50A		25	8	8	200	1600
50A		26	16	6	860	5160
50A		27	20	6	610	3660
50A		28	6.3	104	100	10400
V53	50A	29	8	2	265	530
	60B	30	5	2	255	510
	60B	31	5	14	79	1106
V54=V55 (X2)	50A	32	10	4	300	1200
	50A	33	12.5	4	425	1700
	50A	34	10	4	865	3460
	50A	35	8	4	865	3460
	60B	36	5	80	99	7920

RESUMO AÇO CA 50-60				
AÇO	BIT (mm)	COMPR (m)	PESO (kg)	
60B	5	318	49	
50A	6.3	254	62	
50A	8	81	30	
50A	10	198	122	
50A	12.5	83	80	
50A	16	52	81	
50A	20	48	118	
Peso Total 60B =			49 kg	
Peso Total 50A =			495 kg	

NOTAS:

- 1-MEDIDAS EM CENTÍMETRO.
- 2-CONCRETO ARMADO, fck ≥ 25MPa.
- 3-COBRIMENTO DAS ARMADURAS c = 3,0 cm.
- 4-CONFERIR MEDIDAS NO LOCAL E COM A ARQUITETURA.

A M ENGENHARIA – PROJETO ESTRUTURAL

Fone: (089) 99975–9340 – e-mail: amengenharia.pi@hotmail.com

TÍTULO:

ARMAÇÃO DAS VIGAS V48 A V55

OBRA:

ESCOLA PADRÃO SEDUC – 10 SALAS DE AULA

ENDEREÇO:

RUA PROJETADA, S/N, FARTURA DO PIAUÍ – PI

PROPRIETÁRIO:

GOVERNO DO ESTADO DO PIAUÍ

CONSTRUTOR:

PROJETO:

DESENHO:

DATA:

JUNHO/2017

ESCALA:

INDICADA

FOLHA:

A1

FRANCHA:

16/20